



THOMPSON RIVERS UNIVERSITY

805 TRU Way
Kamloops, BC
V2C 0C8
Tel: 250-828-5000
www.tru.ca/ARET

ARCHITECTURAL & ENGINEERING TECHNOLOGY

1	DOMESTIC WATER AND GAS SYSTEMS SUBMISSION	DEC 08 2020	HC
---	---	-------------	----

No. Revision Date By

PROJECT NAME
Mall Development #455 -5th Avenue Kamloops, B.C.

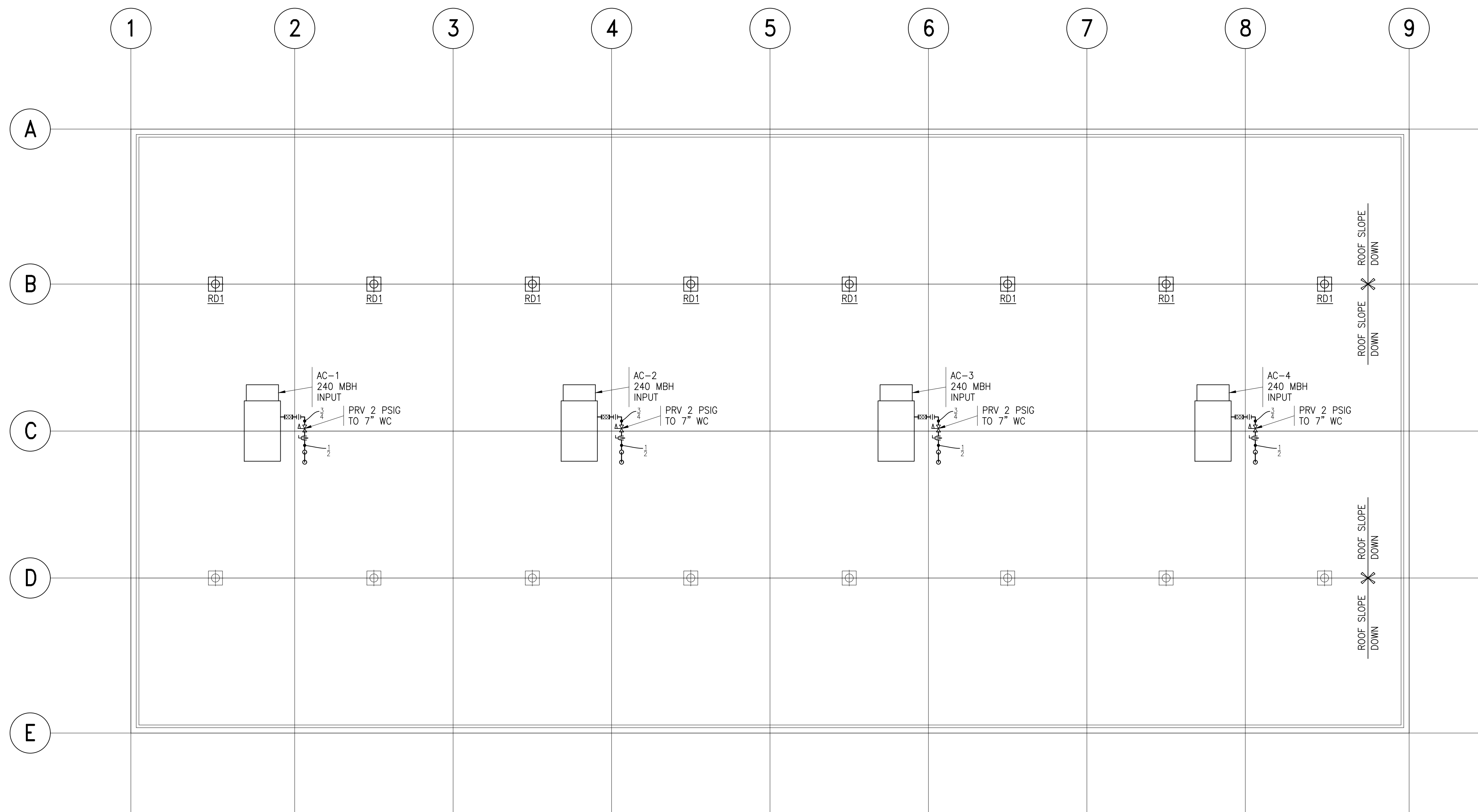
DRAWING TITLE
ROOF PLAN LEGEND AND DETAILS

SCALE
1/8" = 1'-0"

DRAWN BY CLARK	CHECKED PRESCOTT
DATE 08 DEC 2020	JOB NO. 2500-2020

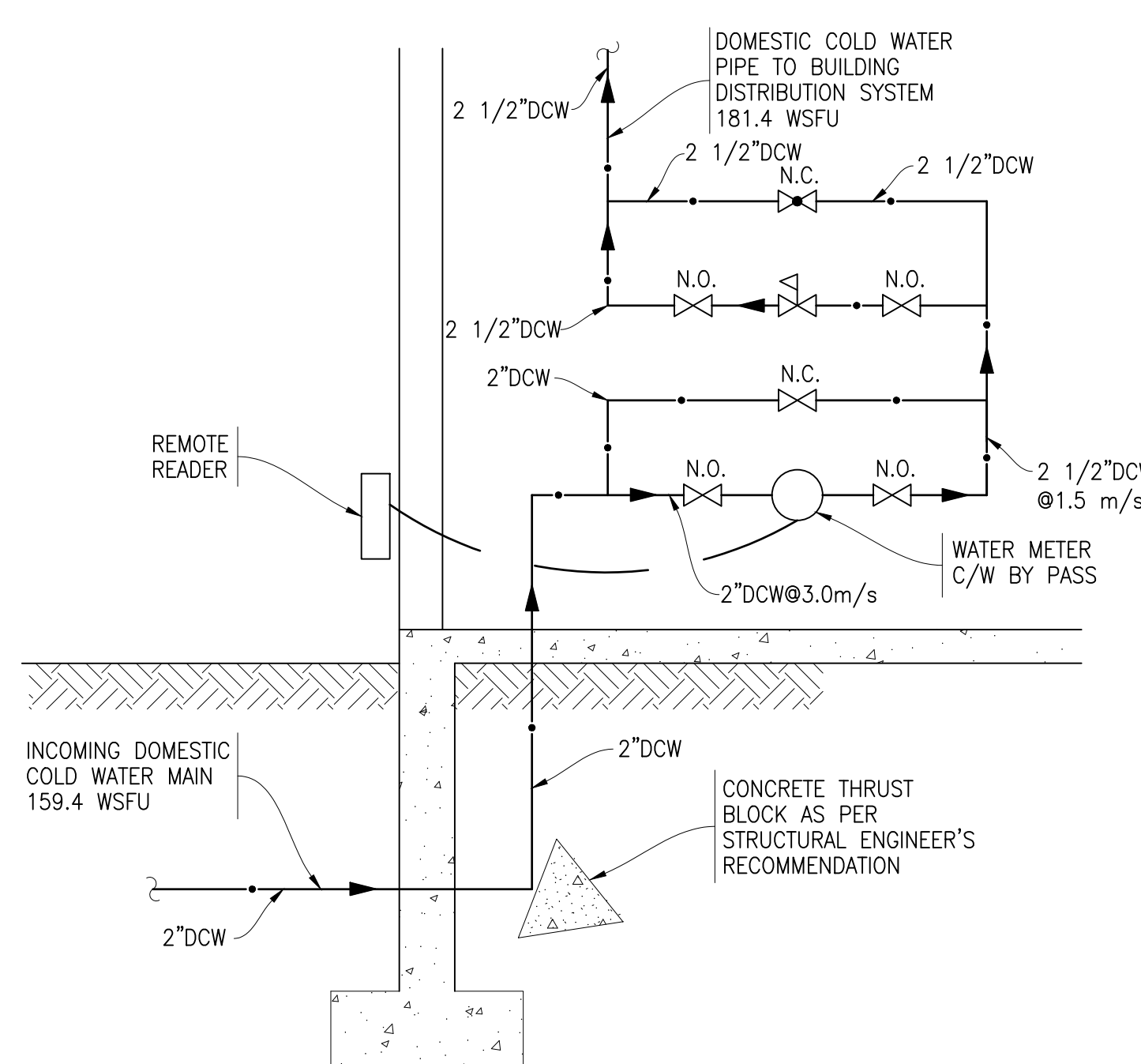
DRAWING NO.

P4



ROOF PLAN
SCALE: 1/8"=1'-0"

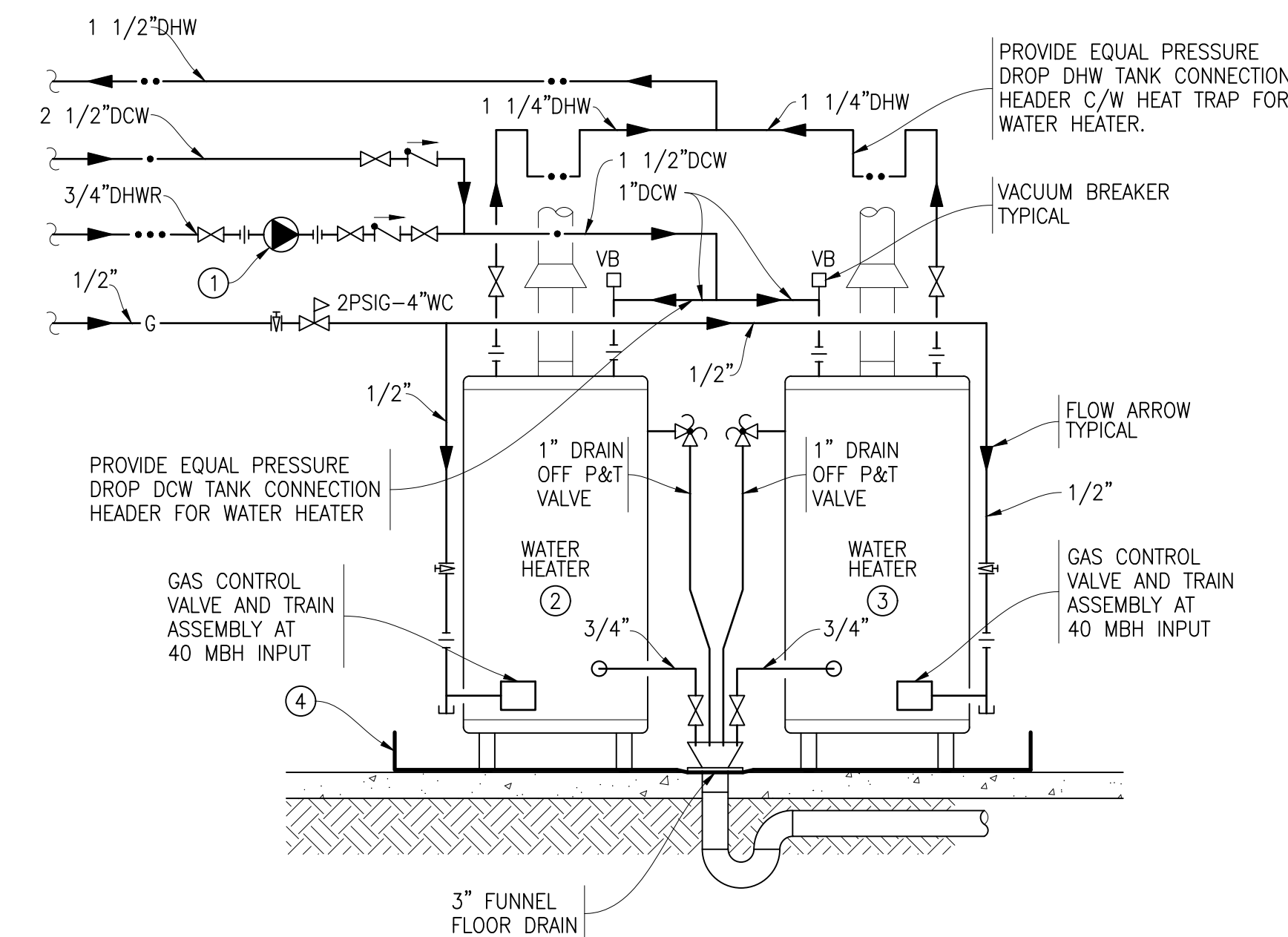
PLUMBING SYMBOL SCHEDULE			
DOM. COLD WATER (DCW)		PRESSURE REDUCING VALVE	
DOM. HOT WATER (DHW)		UNION	
DOM. HOT WATER RECIRC (DHWR)		BALANCING VALVE	
GAS PIPE		STRAINER-Y OR BASKET	
SHUT-OFF VALVE		HOSE BIBB	
GLOBE VALVE		CAP OR PLUG	
CHECK VALVE		ELBOW RISING	
T&P RELIEF VALVE		ELBOW DROPPING	
FLEXIBLE GAS PIPE CONNECTION		PLUMBING FIXTURE (TYPE NOTED)	



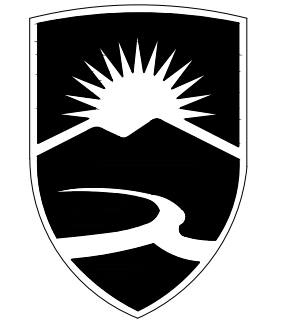
INCOMING WATER SERVICE
NOT TO SCALE

DETAIL NOTES:

- 'P1' TO BE AN ITT B&G POTABLE WATER CIRC. PUMP, LR SERIES MODEL LR-15BWR, BRONZE CONSTRUCTION, 3/4" INLET AND 3/4" OUTLET, 125 WATT MOTOR, 120-1-60 ELECTRICAL SERVICE, 1.65 GPM FLOW RATE AT 3.43 FTWC.
- 'HW1' TO BE BRADFORD WHITE, ATMOSPHERIC VENT, GAS FIRED, WATER TANK/HEATER, MODEL RG260TN, 60 GALLON STORAGE, 40 MBH INPUT, 43 GPH@90 DEGREES TEMPERATURE RISE, 192LBS SHIPPING WEIGHT.
- 'HW2' TO BE BRADFORD WHITE, ATMOSPHERIC VENT, GAS FIRED, WATER TANK/HEATER, MODEL RG260TN, 60 GALLON STORAGE, 40 MBH INPUT, 43 GPH@90 DEGREES TEMPERATURE RISE, 192LBS SHIPPING WEIGHT.
- 3" GALVANIZED DRIP PAN DRAIN TO FUNNEL FLOOR DRAIN. DRAIN PAN TO EXTEND A MINIMUM OF 6" BEYOND THE WATER TANK/HEATERS ON ALL SIDES.



DOUBLE GAS FIRED HOT WATER TANK/HEATER PIPING DETAIL
NOT TO SCALE



THOMPSON RIVERS UNIVERSITY

805 TRU Way
Kamloops, BC
V2C 0C8
Tel: 250-828-5000
www.tru.ca/ARET

ARCHITECTURAL & ENGINEERING TECHNOLOGY

1	DOMESTIC WATER AND GAS SYSTEMS SUBMISSION	DEC 08 2020	HC
No.	Revision	Date	By

PROJECT NAME
Mall Development #455 -5th Avenue Kamloops, B.C.

DRAWING TITLE
MAIN FLOOR AND PART FLOOR PLANS

SCALE
1/8" = 1'-0"

DRAWN BY
CLARK

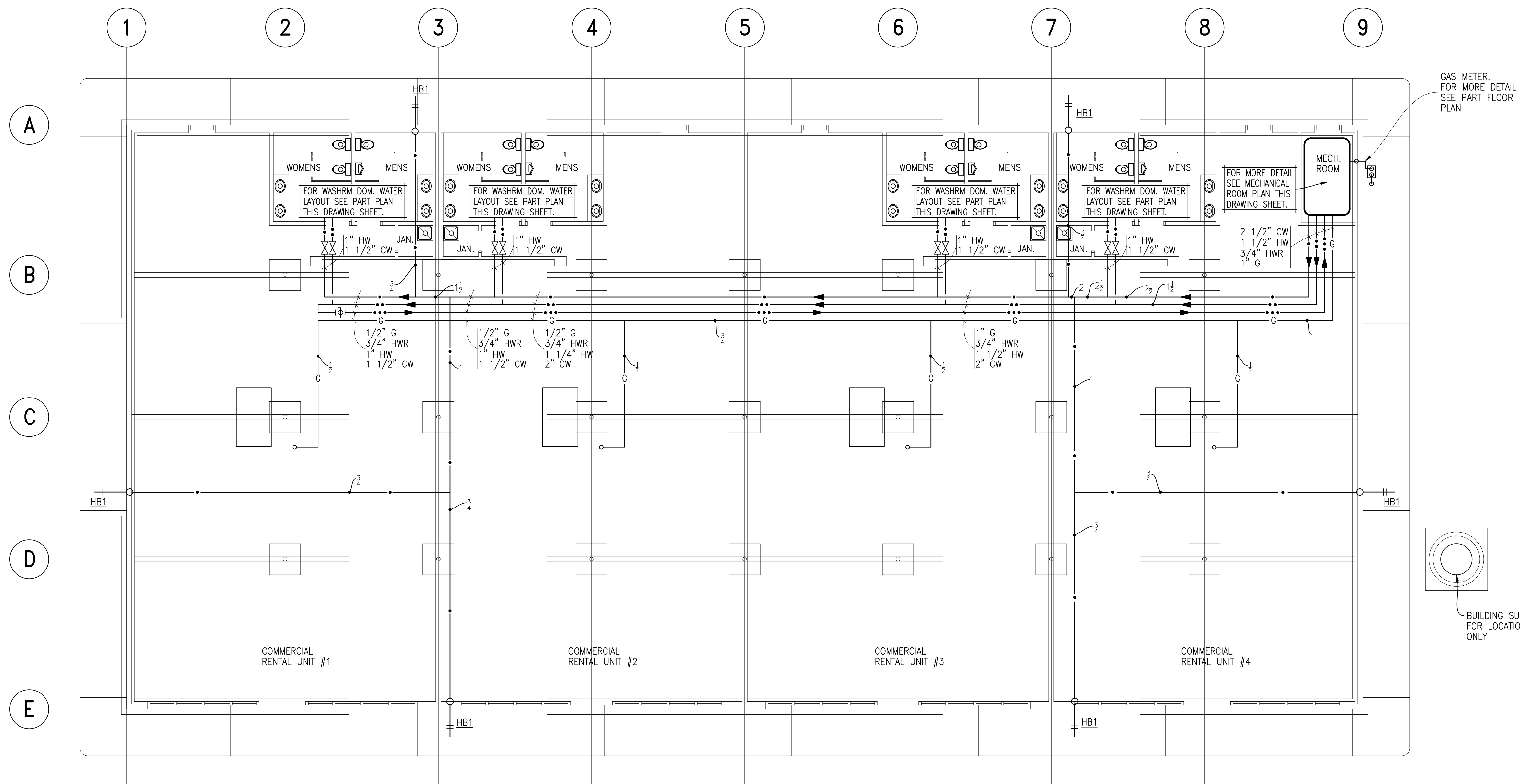
CHECKED
PRESCOTT

DATE
08 DEC 2020

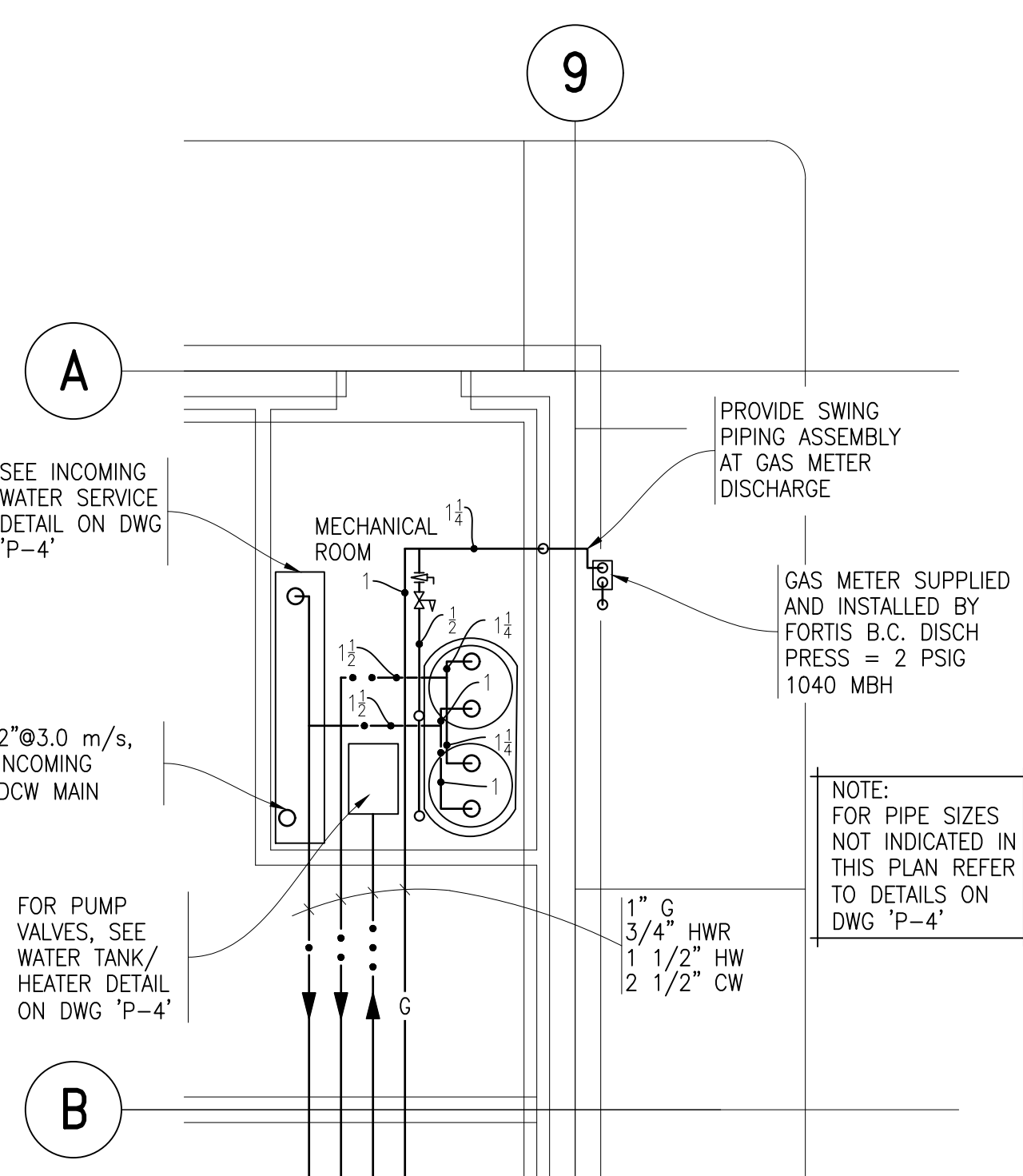
JOB NO.
2500-2020

DRAWING NO.

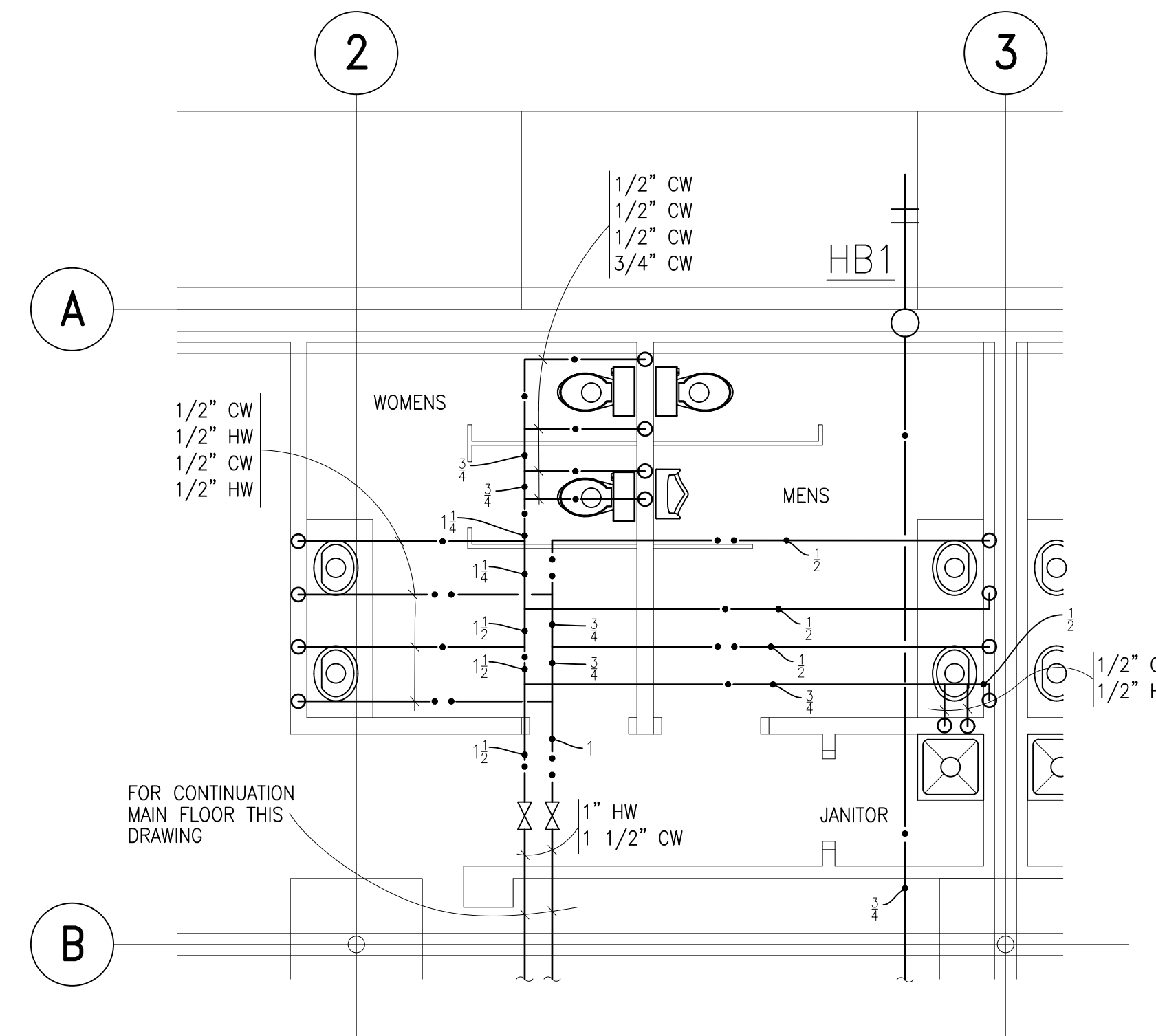
P5



FLOOR PLAN
SCALE: 1/8"=1'-0"



PART FLOOR PLAN
SCALE: 1/4"=1'-0"



PART WASHROOM PLAN
SCALE: 1/4"=1'-0"